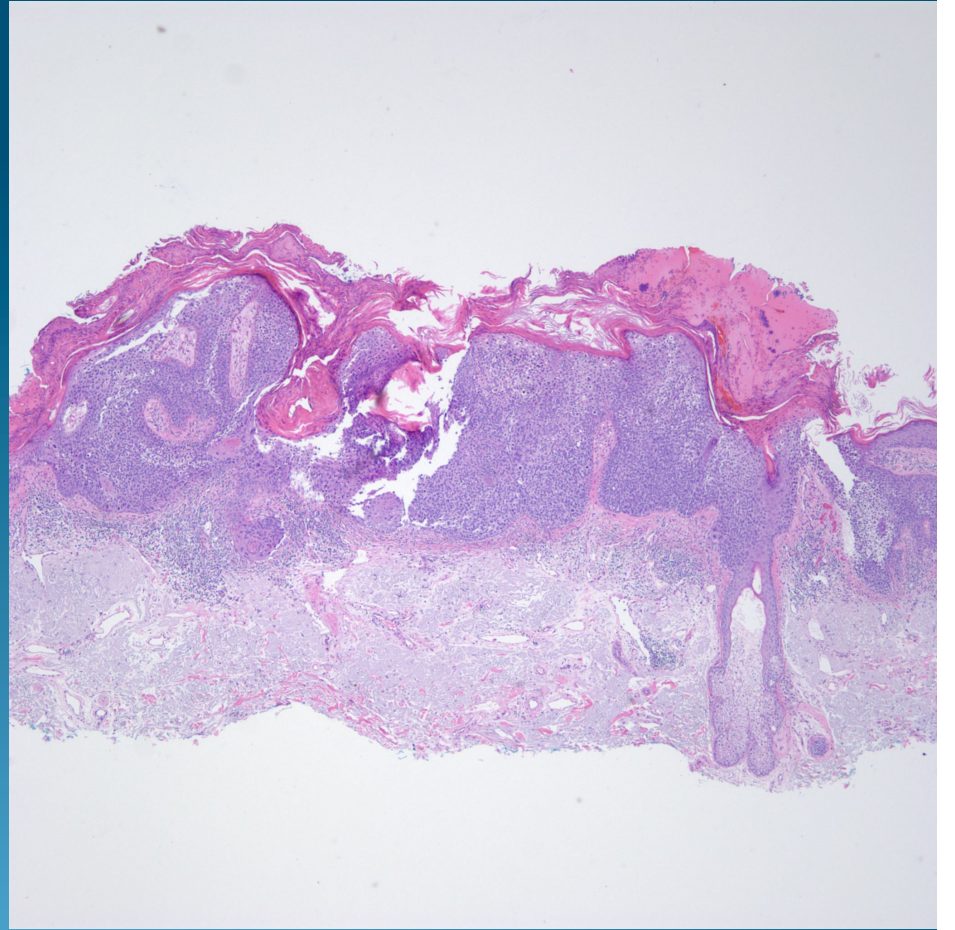
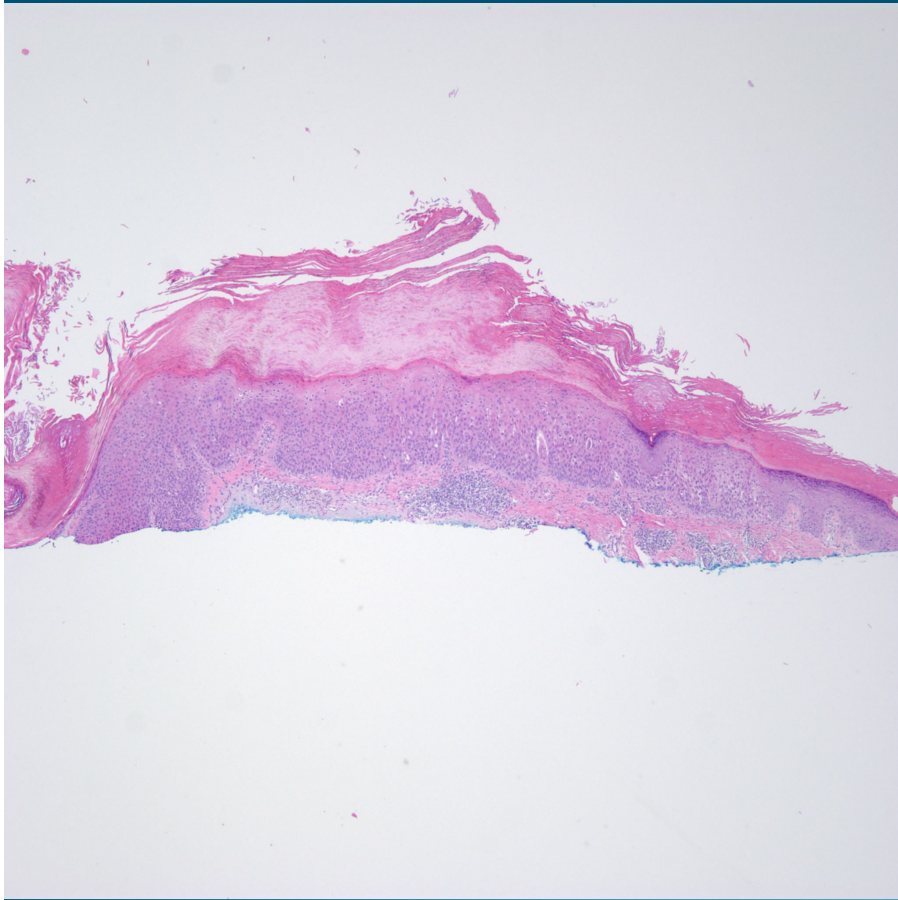
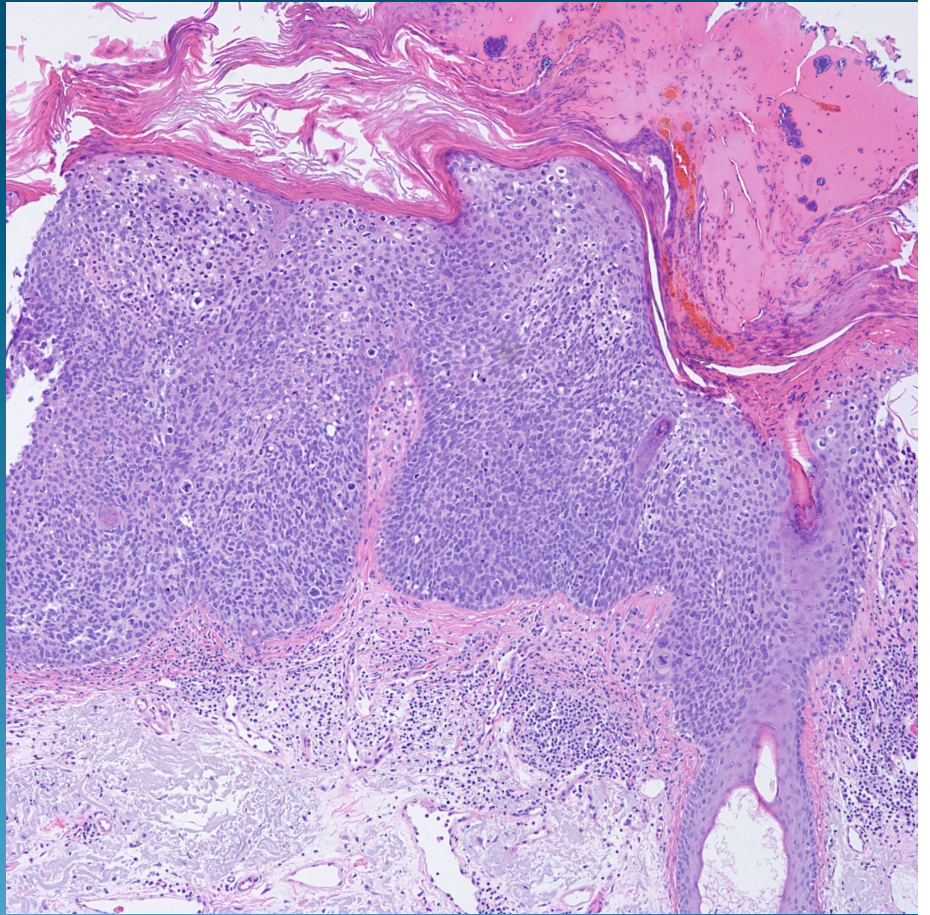
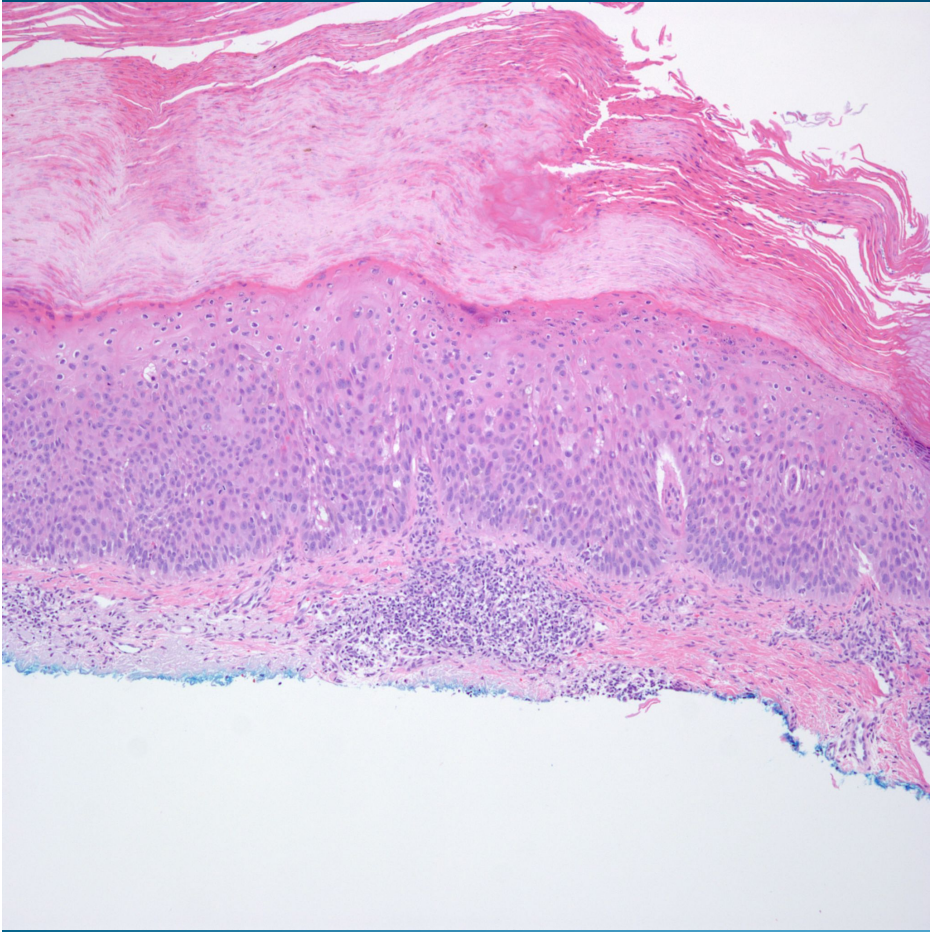


# Differential Diagnosis Hyperplastic Actinic Keratosis or Squamous Cell Carcinoma in Situ\*

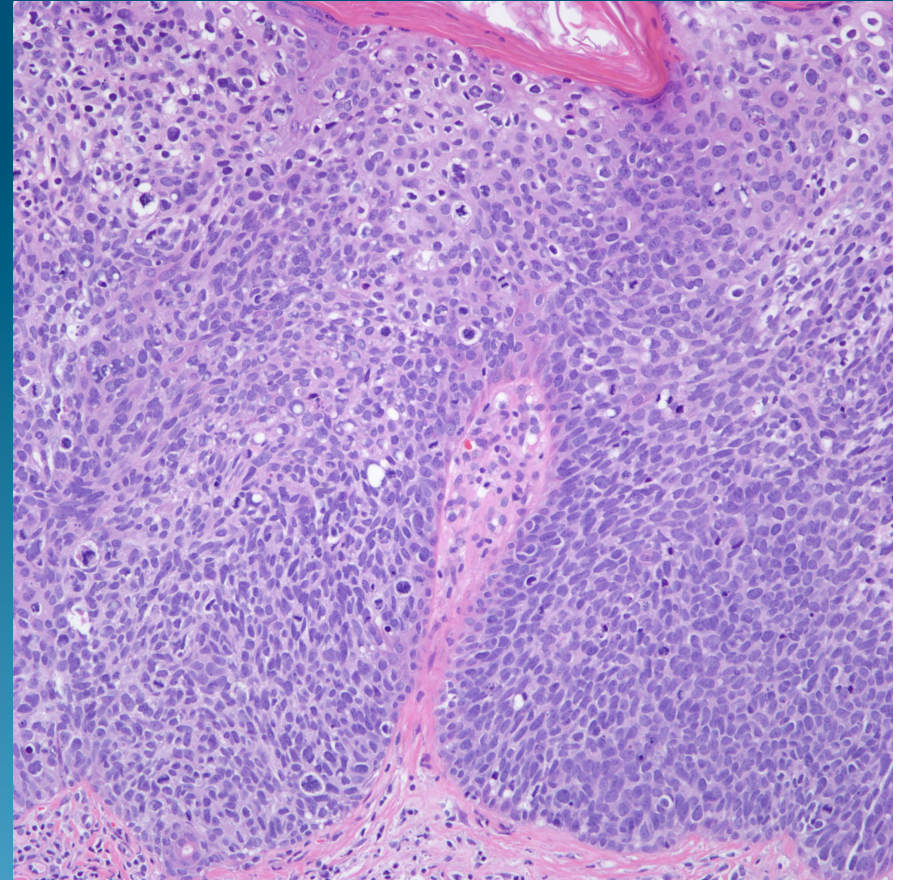
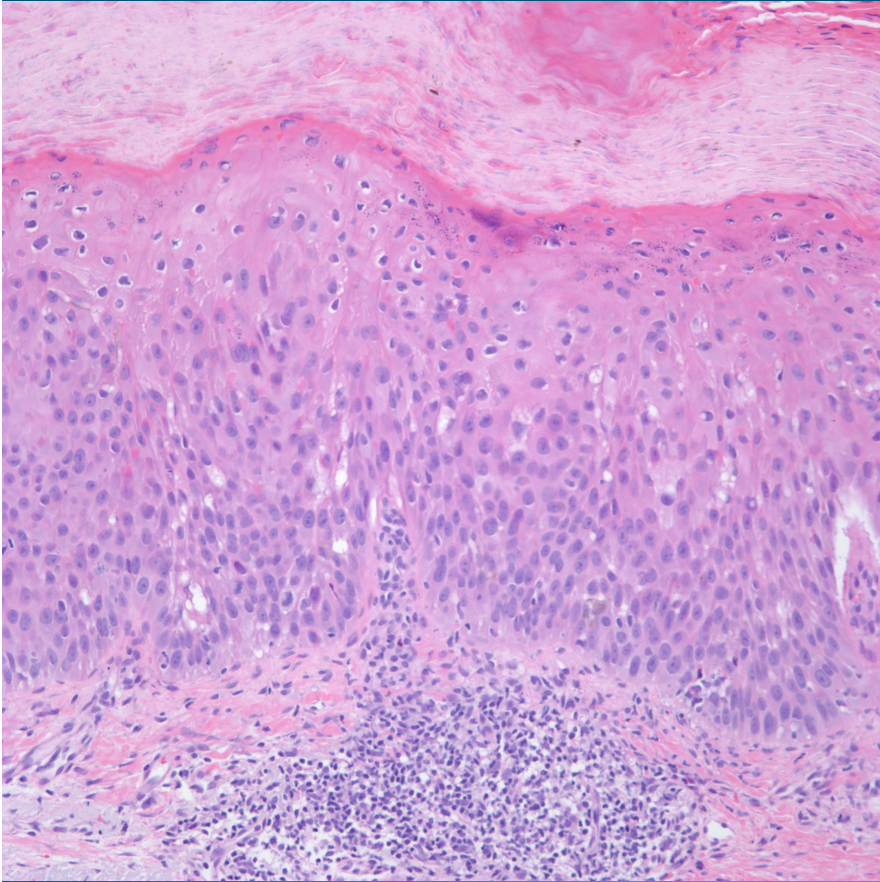
\*Each side of the screen is the same lesion photographed at increasing magnifications.



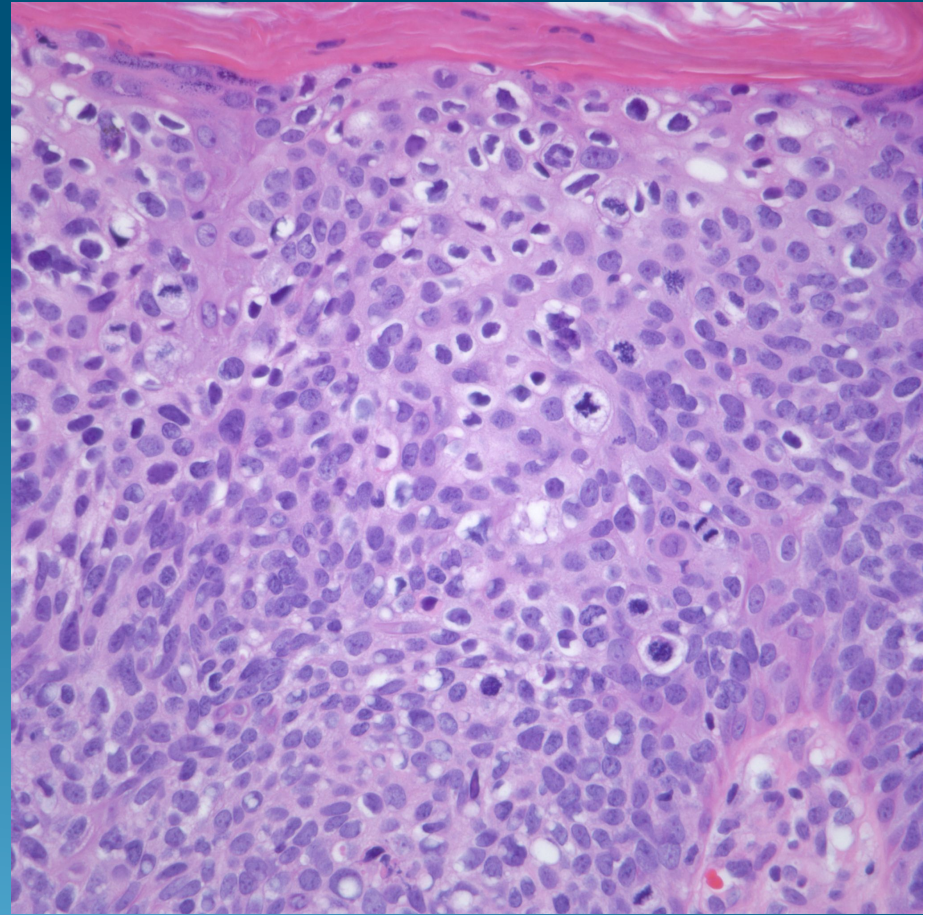
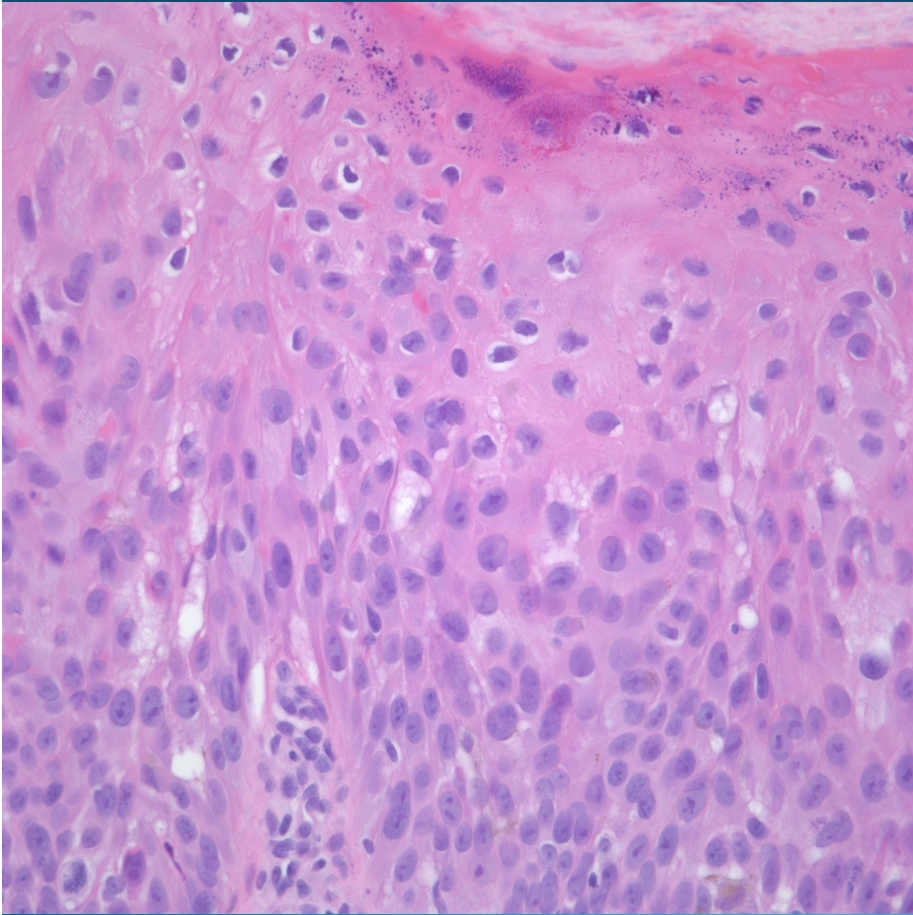








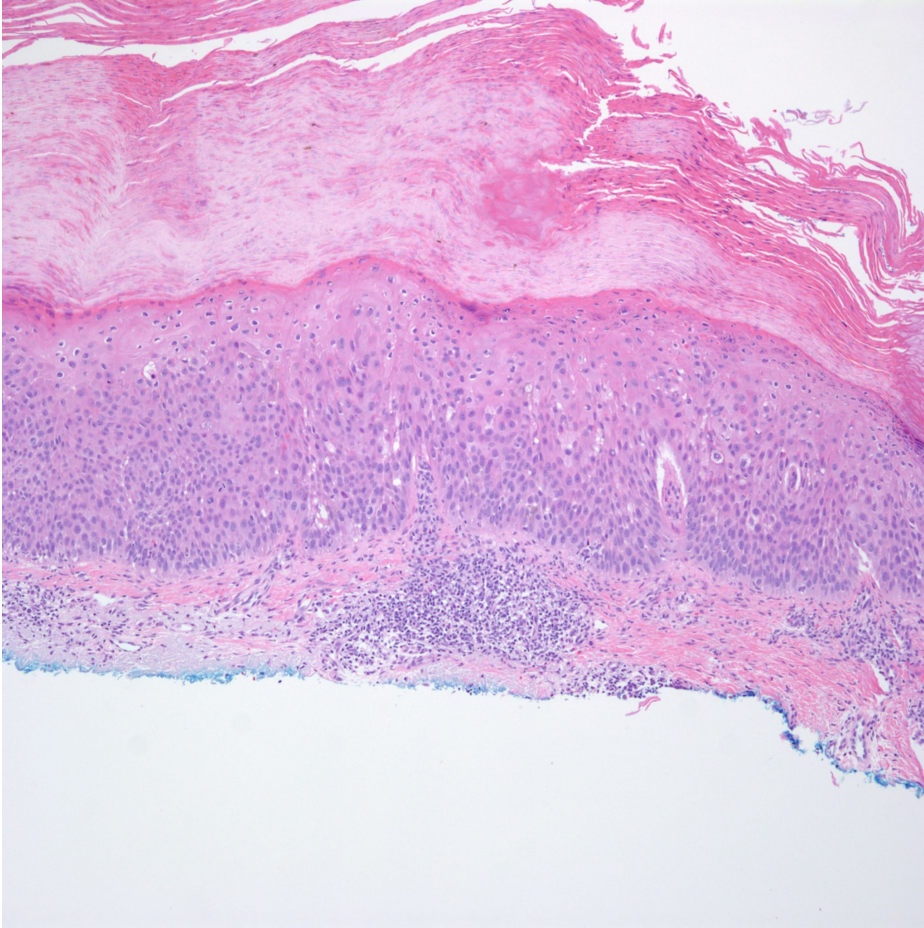




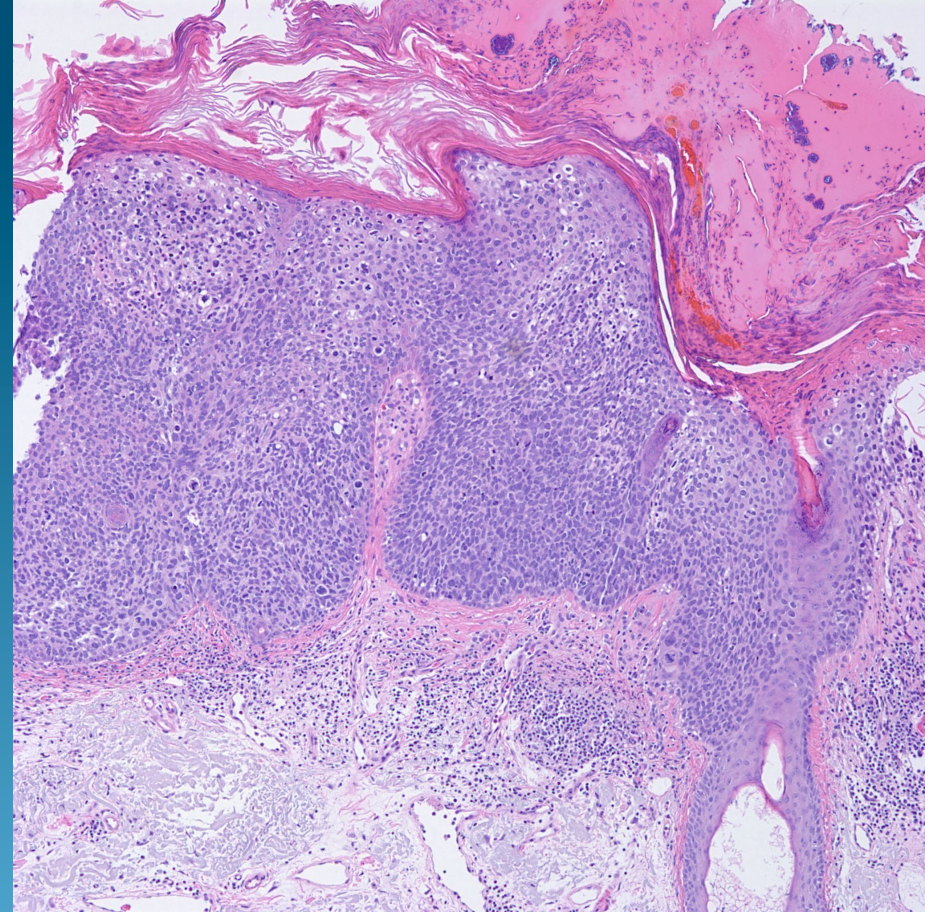
Hyperplastic Actinic Keratosis or  
Squamous Cell Carcinoma in Situ?



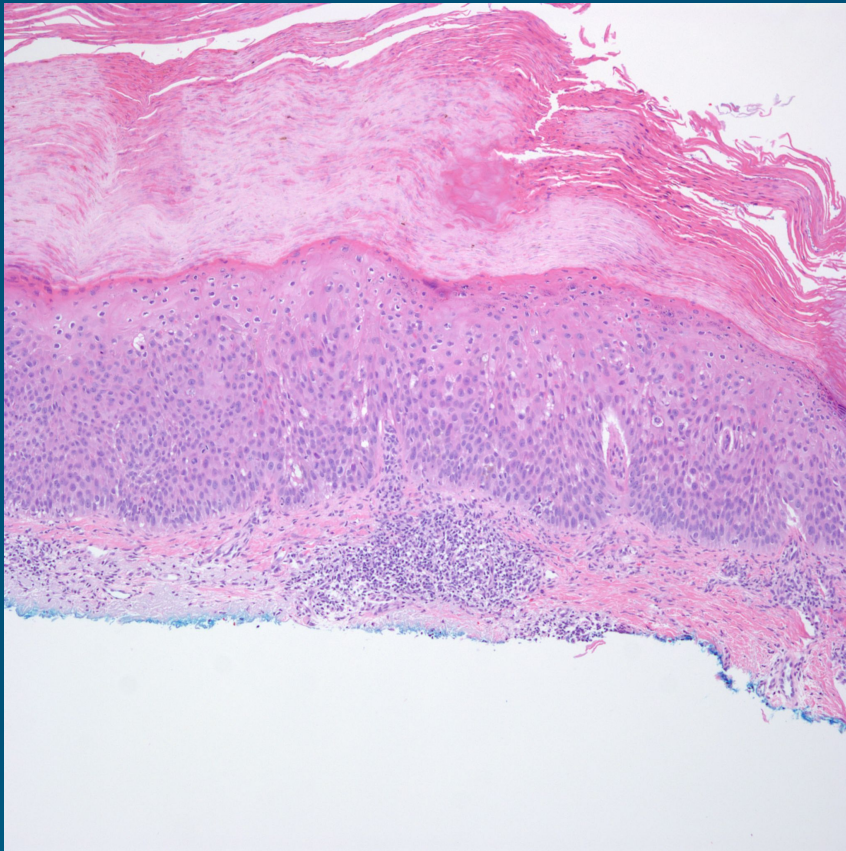
Hyperplastic Actinic Keratosis



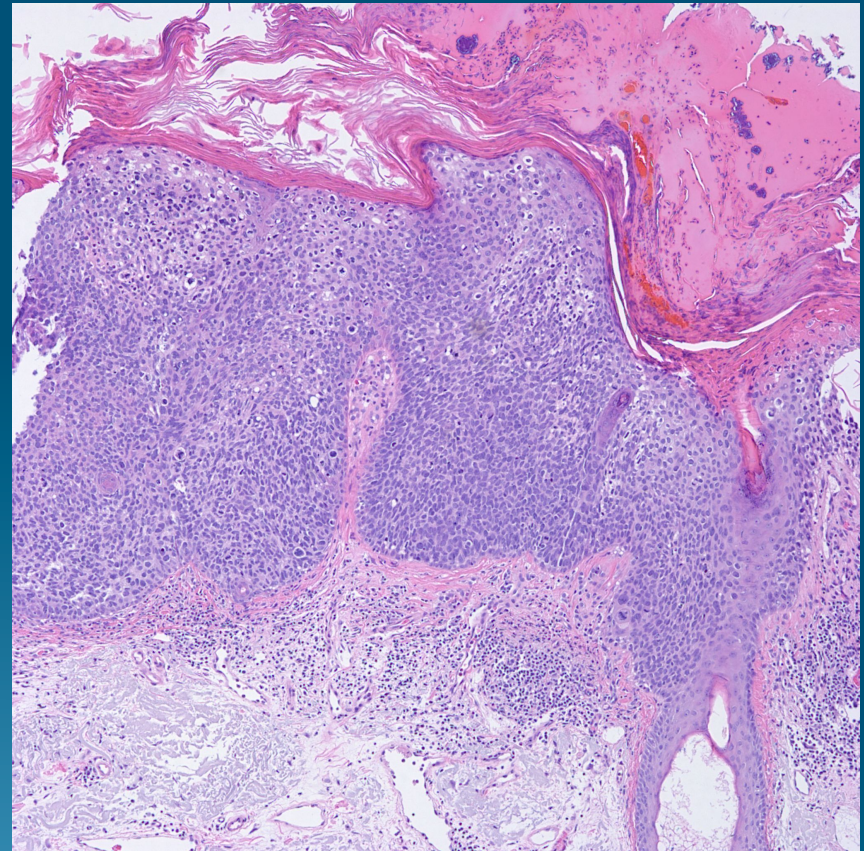
Squamous Cell Carcinoma in Situ







Near full thickness epidermal replacement  
By atypical keratinocytes  
Sparing of the follicular infundibulum



Full thickness replacement of epidermis  
By atypical keratinocytes  
No sparing of the follicular infundibulum  
Loss of polarity of keratinocytes  
Atypical mitotic figures  
Dyskeratotic keratinocytes