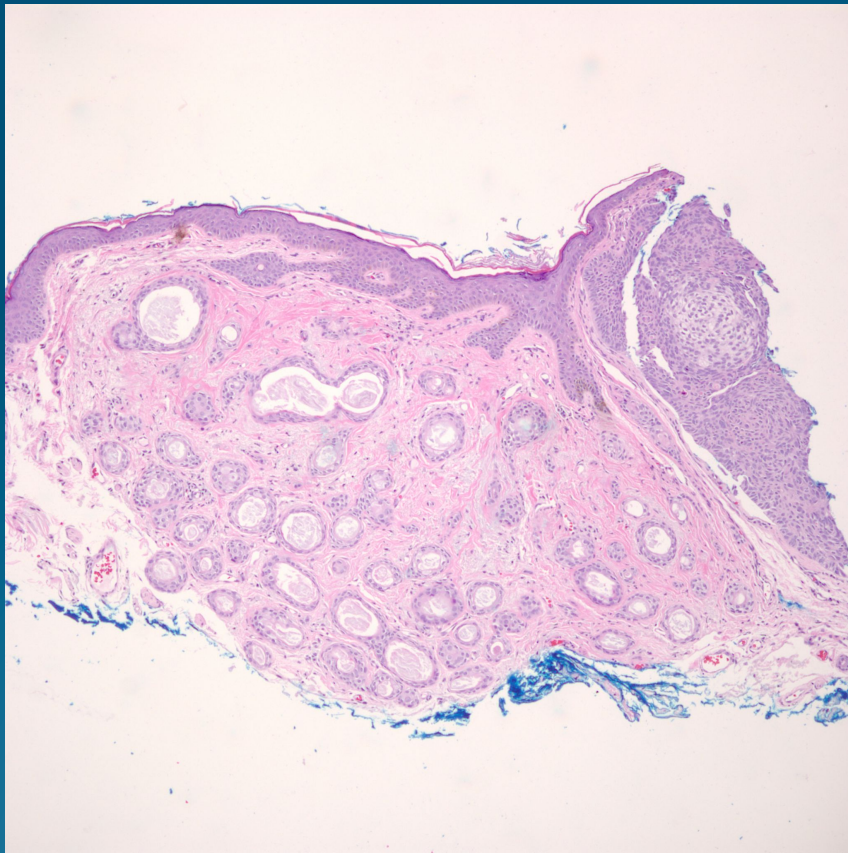


What is the best diagnosis?

- A. Chondroid syringoma
- B. Basal cell carcinoma with follicular differentiation
- C. Nodular hidradenoma
- D. Basal cell carcinoma with syringoma
- E. Microcystic adnexal carcinoma

Basal cell carcinoma with syringoma

Pearls



- Not an uncommon occurrence, especially on or around eyelids
- Distinctly different morphology of glands lined by bland squamous cells juxtaposed with basal cell carcinoma