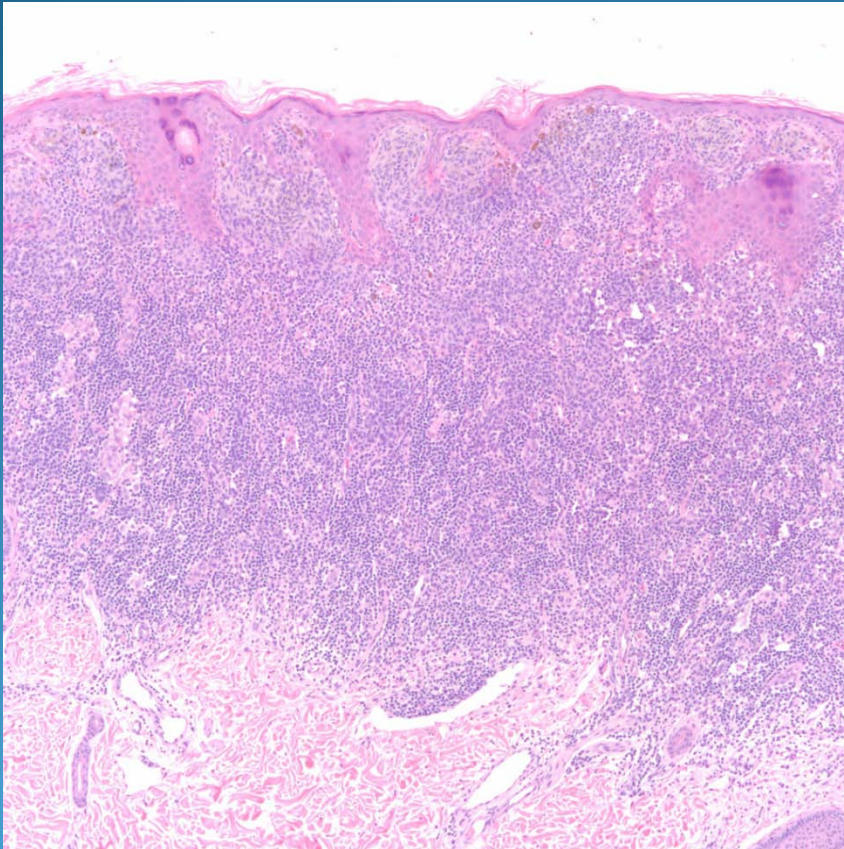


# Halo Nevus

# Pearls



- Dense lichenoid inflammatory cell infiltrate of mature lymphocytes and histiocytes with melanophages
- Must mentally subtract out lymphocytes and examine the melanocytic proliferation applying same principles of grading all melanocytic nevi
- Halo infiltrate does not necessarily equate to clinical halo
- Halo may be seen in all types of melanocytic proliferation including melanoma