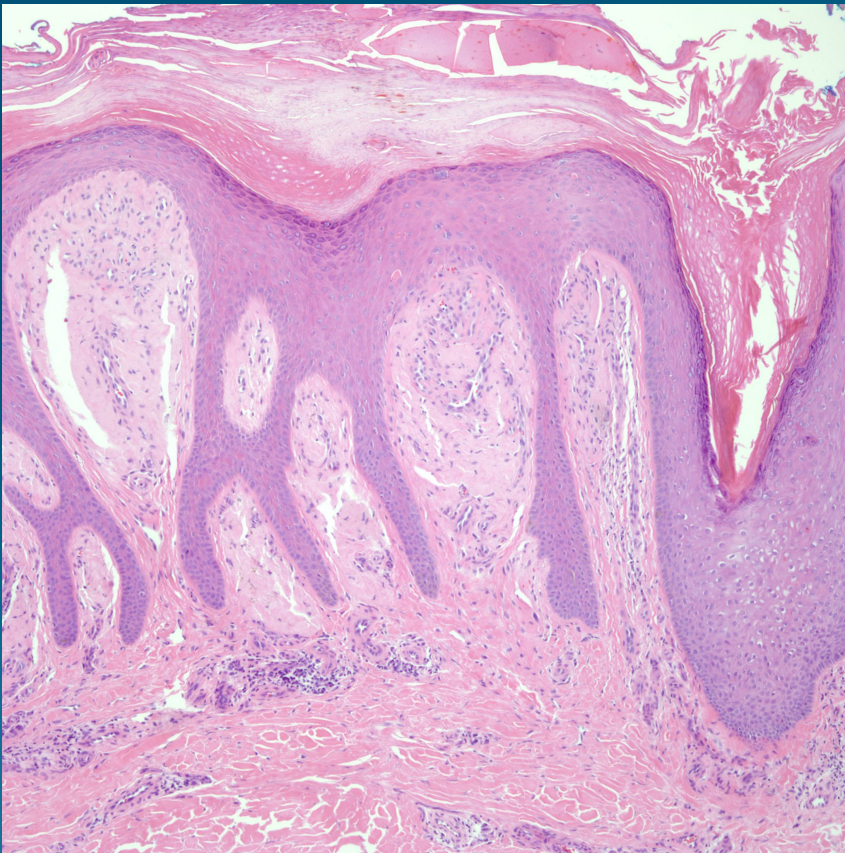


# What is the best diagnosis?

- A. Lichen amyloidosis
- B. Macular amyloidosis
- C. Acral fibrokeratoma
- D. Glomus tumor
- E. Nevus sebaceus

# Lichen amyloidosis

# Pearls



- Irregular epidermal hyperplasia with hyper- and parakeratotic scale
- Dermal papillary fibroplasia with hyaline deposits
- May have scattered melanophages
- Amyloid stains (eg Congo red) may not be positive in cutaneous keratin-derived amyloid