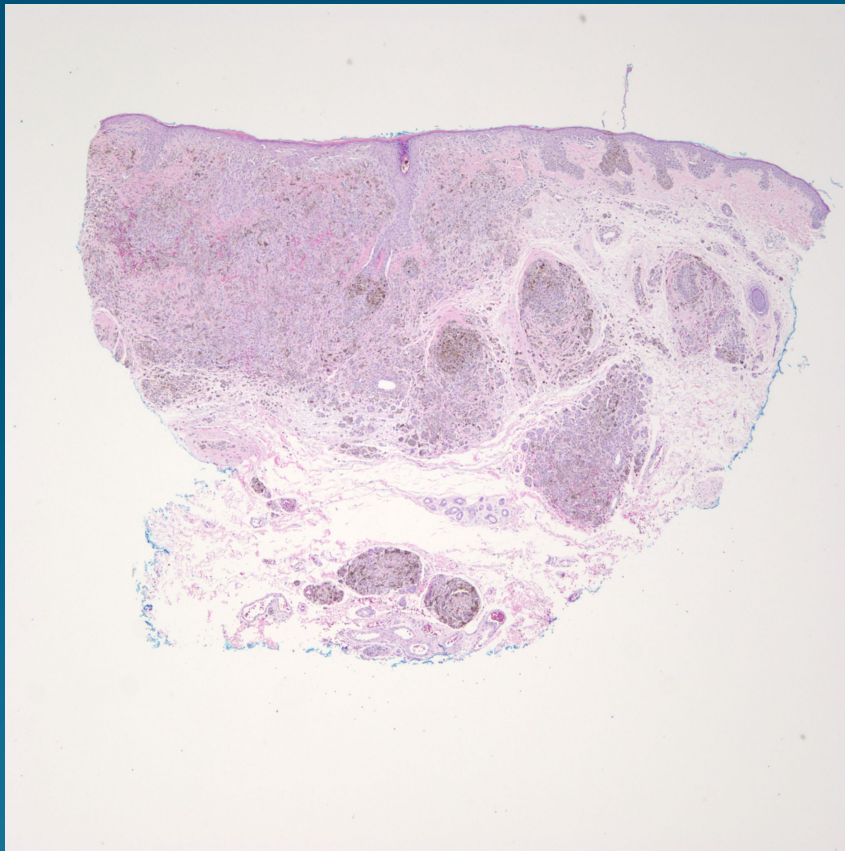


What is the best diagnosis?

- A. Pigmented basal cell carcinoma
- B. Blue nevus
- C. Desmoplastic nevus
- D. Malignant melanoma, superficial spreading type
- E. Malignant melanoma, lentigo maligna type

Malignant melanoma, Lentigo Maligna Type

Pearls



- Broad replacement of dermal-epidermal junction by atypical melanocytes arranged in expansile nests extending along adnexal epithelium
- Usually minimal upward intraepithelial spread
- Invasive melanocytes with varied morphology- epithelioid to spindled