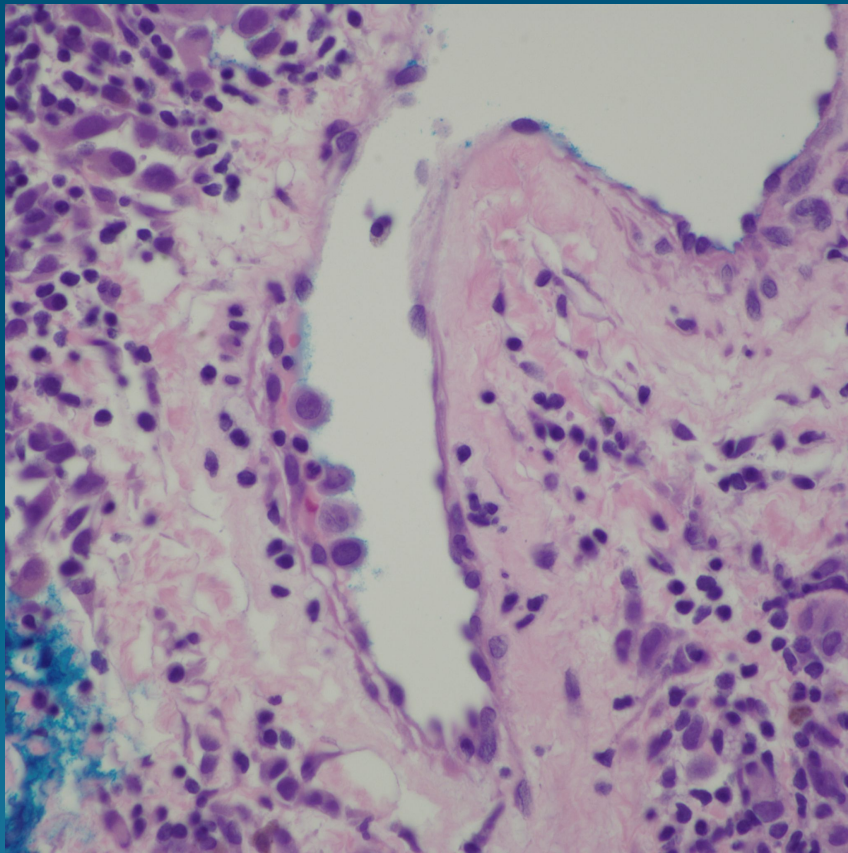


What is the best diagnosis?

- A. Malignant Lymphoma with Intravascular Features
- B. Nodular basal cell carcinoma
- C. Malignant melanoma
- D. Nodular hidradenocarcinoma
- E. Malignant Glomus Tumor

Malignant Melanoma with Lymphovascular Invasion

Pearls



- Lymphovascular invasion may be seen with any melanoma variant
- Look for melanoma cells within lymphovascular spaces
- CD31 and D2-40 (podoplanin) helpful to outline vessels