



What is the significance of the collection of melanophages adjacent to the invasive malignant melanoma?

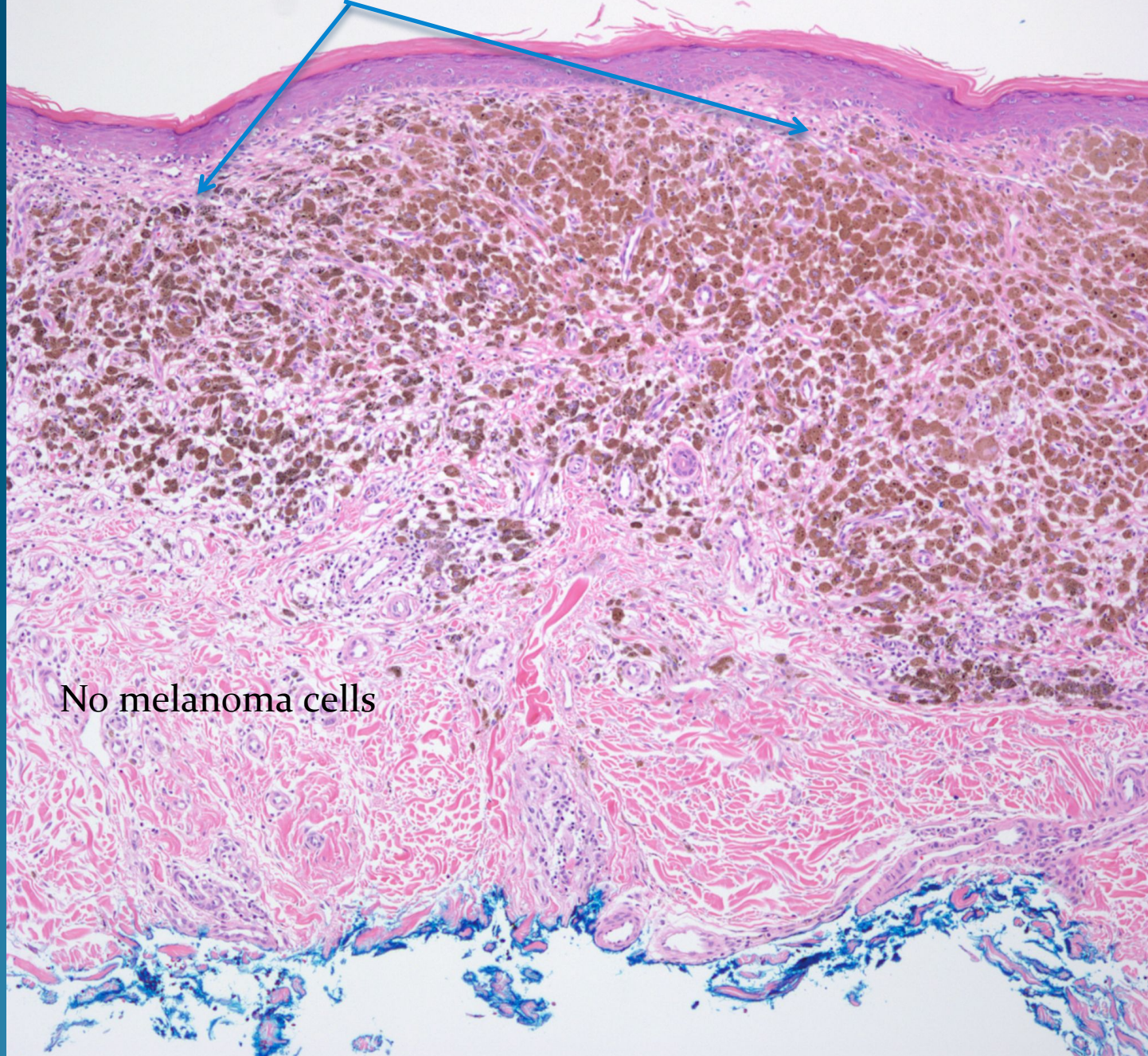


# Malignant Melanoma with Tumoral Melanoma

- Tumor melanosis is a form of regression with melanomas
- It is characterized by a nodular collection of heavily pigmented melanophages
- May need to bleach the sections and apply immunohistochemical studies to confirm the cells are macrophages and not invasive melanoma cells



Broad collection of melanophages



No melanoma cells