

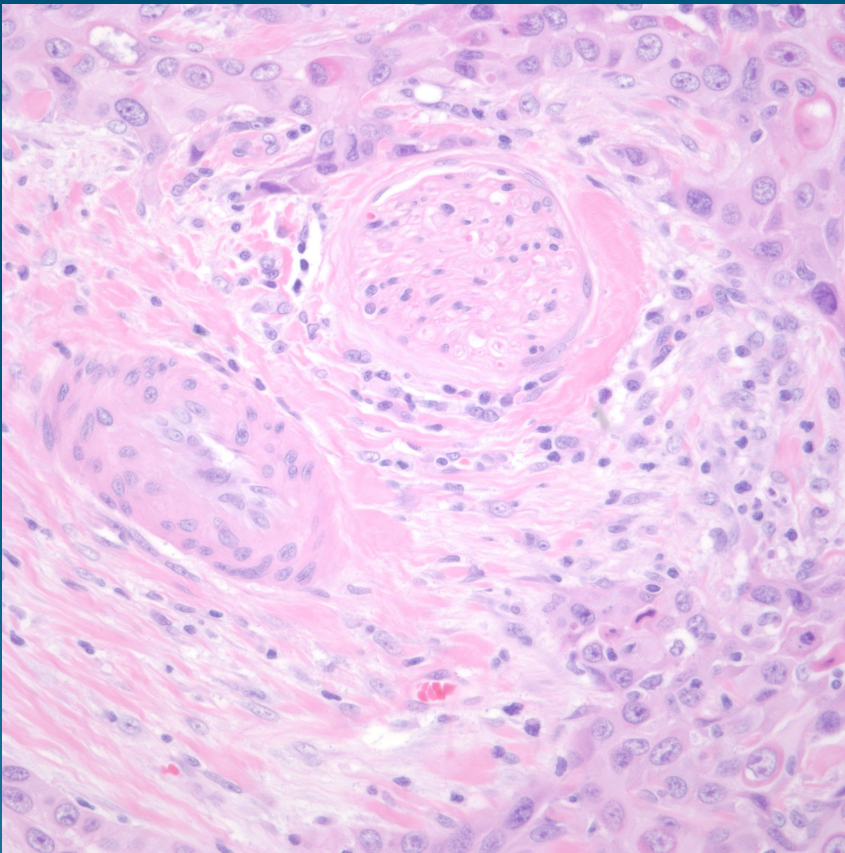
# What is the best diagnosis?

- A. Squamous cell carcinoma
- B. Basal cell carcinoma-morpheaform type
- C. Merkel Cell Carcinoma
- D. Microcystic adnexal carcinoma
- E. Hidradenocarcinoma

Squamous cell carcinoma,  
Poorly Differentiated.  
With perineural Invasion



# Pearls



- Always grade your squamous cell carcinomas
- If possible, histologically subtype
- Look for perineural and lymphovascular invasion
- May use S100 and D2-40 (podoplanin) to assist