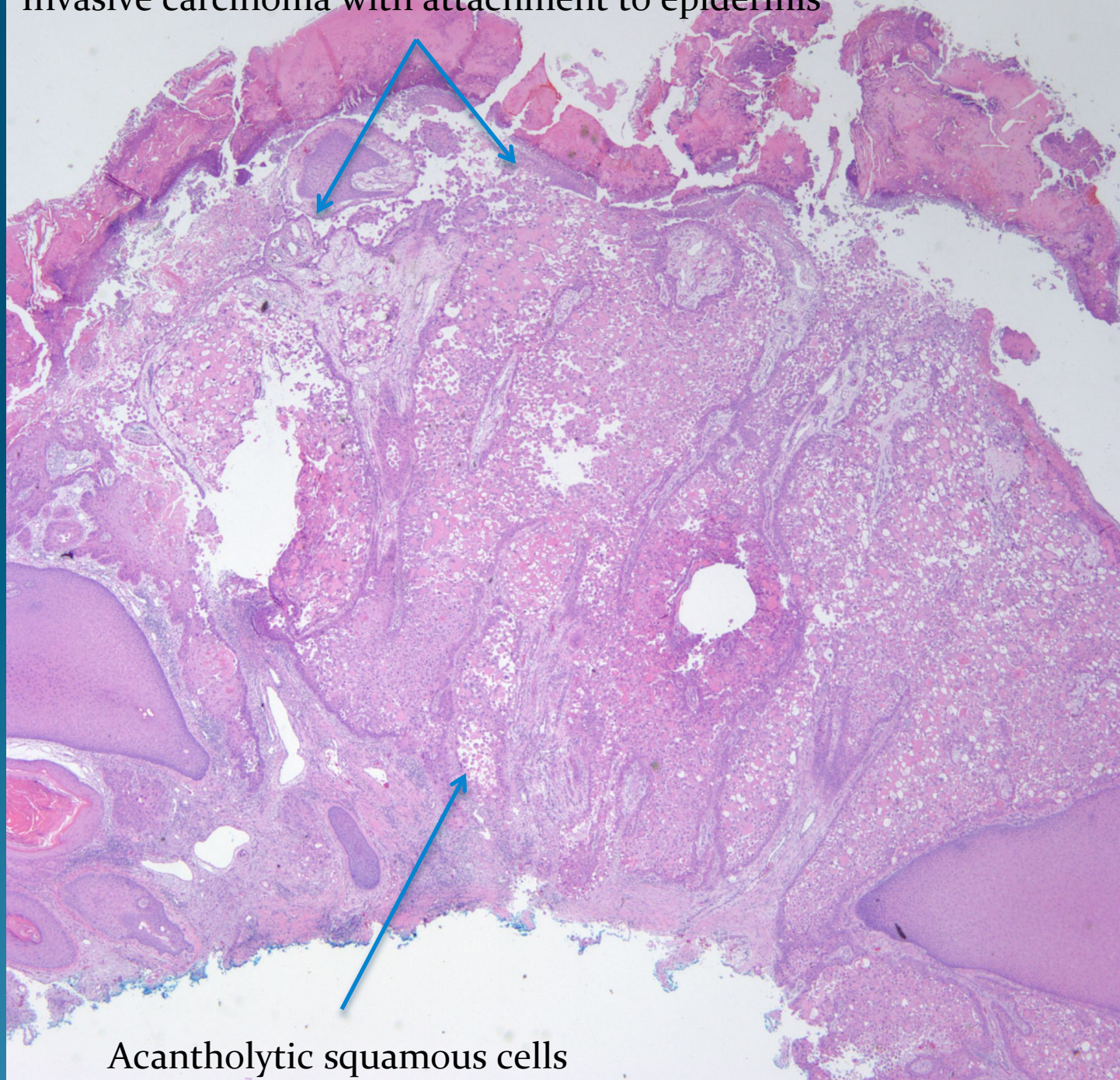


# What is the best diagnosis?

- A. Epithelioid angiosarcoma
- B. Atypical fibroxanthoma
- C. Basal Cell Carcinoma
- D. Warty Dyskeratoma
- E. Squamous cell carcinoma

Squamous Cell Carcinoma,  
Well differentiated  
With Acantholytic Features

Invasive carcinoma with attachment to epidermis



Acantholytic squamous cells